

**Hotel Dieu Hospital
Kingston General Hospital
Providence Care
University Hospitals Kingston Foundation**



***Together We Are
Leading Care, Changing Lives***



**University hospitals of Kingston
2008 / 2009 Joint Annual Report**



Together we are building for our future

Joint chairs' message

Sherri McCullough
Chair, Board of Directors
Hotel Dieu Hospital

William Richard
Chair, Board of Directors
Kingston General Hospital

Jim Barton
Chair, Board of Directors
Providence Care

Peter Merkley
Chair, Board of Directors
University Hospitals
Kingston Foundation

Together We Can. This slogan for the University Hospitals Kingston Foundation's campaign to raise money for redevelopment, equipment, research and staff education at Hotel Dieu Hospital, Kingston General Hospital and Providence Care aptly describes the dynamic collaborations between our three health-care providers and our joint fundraising arm.

Although our hospitals each play distinct roles across the health-care spectrum, together we provide exemplary patient care, pioneering research and outstanding teaching opportunities every day to more than 500,000 people in Southeastern Ontario who rely on us for care. Together, we work closely with our regional health-care partners including Queen's University and the South East Local Health Integration

Network to ensure our shared expertise provides the greatest benefit to all.

In this joint report, we highlight just some of our many triumphs and successes this past year. These include, on the opposite page, tangible ways in which we continue moving forward with a joint redevelopment project designed to create facilities that will keep pace with patient demands, help us to recruit and retain valuable health-care professionals and, through our affiliation with Queen's University, provide the next generation of health-care providers with an optimum learning environment.

Portions of Kingston General Hospital's Burr Wing construction project will be completed in 2010.

Hotel Dieu Hospital awaits green light on sketch plans

In the spring of 2009, Hotel Dieu Hospital moved closer to its future as the region's specialized ambulatory care centre with the completion of the sketch plan for a major redevelopment project that will see the overhaul of 36,000 square feet of the hospital to accommodate outpatient clinics moving from Kingston General Hospital to Hotel Dieu.

The sketch plan digs into the details of

ditional 45,000 outpatient visits - as the remaining ambulatory clinics transfer from KGH to Hotel Dieu.

Kingston General Hospital's project is 20% complete

The city block surrounding Kingston General Hospital has been a bustling hub of activity since cranes took to the skies in July 2008, signalling the much-anticipated start of its ambitious construction project.

Infrastructure Ontario and the Ministry of Health and Long-Term Care on the \$142-million project that will help our academic health sciences centre best serve our patients in years to come.

Property set aside for new Providence Care hospital

Plans for a new Providence Care hospital are moving forward, thanks to an agreement between Providence Care and the Ontario Realty Corporation. In March 2009, the ORC agreed to set aside 25 acres of land for Providence Care at King Street West and Portsmouth Avenue for the construction of a new hospital. The agreement could lead to Providence Care and the ORC signing a long-term lease on the property, contingent upon approval of their capital plan by the Ministry of Health and Long-Term Care and the Ministry of Energy and Infrastructure.

The new building would bring together Providence Care's mental health, complex continuing care, palliative care, specialized geriatric medicine, and rehabilitation programs, and replace the aging St. Mary's of the Lake Hospital and Mental Health Services facilities.

In keeping with Providence Care's strategic direction to enhance the quality of life for patients, residents and clients, the new hospital will provide greatly needed treatment, living, teaching, research and community space. The new building will offer space for patients and clients which is clinically sound and designed with dignity and privacy in mind. The space will be wheelchair accessible throughout with bright living spaces.

The redevelopment of Kingston University Hospitals would not be possible without significant support from the communities we serve and the University Hospitals Kingston Foundation's \$70 million Together We Can fundraising campaign. The campaign has raised \$59 million toward the community's share of the costs. The province will pay 90 per cent of the construction provided the community picks up the remaining 10 per cent plus the cost of most equipment. Learn more about redevelopment at www.kingstonhospitals.ca.

We are always striving to do better for our patients, our staff, our communities – together we can.

redevelopment, specifically: building new generic clinic space on two floors, featuring treatment rooms, waiting areas, teaching space and specimen collection areas; building a brand new pulmonary function testing lab; and renovating existing space to house a cystoscopy suite.

Approved by the Board of Directors, the sketch plan now awaits the stamp of approval from the Ministry of Health and Long-Term Care. That approval will clear the way for Hotel Dieu to proceed with contract documents and drawings, the final stage of the design process. The hospital is optimistic it will begin that stage in September 2009.

The overall redevelopment project is expected to go to tender by early 2010 and construction to get underway in April 2010. The completion date is set for the fall of 2011.

Preceding the exciting news about the sketch plan was a milestone event, when the first major phase of outpatient clinics transferred from KGH into pre-existing or slightly renovated space at Hotel Dieu.

About 6,200 annual outpatient visits made the shift, which included endocrinology, cognitive disorders and clinical immunology. Clinics in osteoporosis and orthopaedics had moved earlier in the year.

When the second, larger phase of the redevelopment project wraps up, patient volumes will jump once again - to an ad-

The KGH redevelopment project includes the addition of 170,000 square feet and renovations to another 143,000 square feet of the existing facility and will result in major improvements to seven key areas. When the multi-year project wraps up in 2012, patients from across Southeastern Ontario will benefit from larger, upgraded and more patient-centred facilities including an expanded cancer centre, intensive care unit, inpatient kidney dialysis unit and inpatient pediatric wing. The sprawling project includes additional inpatient beds, the renovation and expansion of central processing services (the area that provides clean, sterile surgical and procedure equipment) and a new home for the acute inpatient mental health program that will move to KGH from Hotel Dieu Hospital.

Coming up to the first anniversary of the project's start, the project is 20 per cent complete - and it shows. The hospital's outer façade along King Street is forever changed with the addition of three new floors on the Burr wing atop the existing Cancer Centre of Southeastern Ontario and two more atop the Kidd tower. The project remains on schedule and several areas including pediatrics and the first phase of the intensive care unit expansion should be ready for occupancy in early 2010.

KGH continues to work closely with



Hotel Dieu
HOSPITAL

Our Mission

The mission of Hotel Dieu Hospital in Kingston, rooted in the Gospel of Jesus Christ, is to make visible the compassionate healing presence of God to all persons. We share in this mission by being a caring and just community. This is expressed through the pursuit of excellence in health service, education and research.

Our Vision

Embracing innovation and focused on healing, our vision is to be Canada's leading academic ambulatory health care centre.

Our Values

As a community of equals we gather in our diversity as sponsors, employees, physicians, volunteers and members of the Board of Directors to further the Mission of compassionate healing.

We share values centered on:

- Dignity of the human person
- Caring
- Community and common good
- Compassion
- Justice
- Stewardship

We are leading outpatient care

Fast-tracking hip and knee replacements

Wait times for a new hip or knee got a little shorter in the spring of 2009 when Hotel Dieu Hospital launched the region's first fast-track total joint replacement (TJR) program.

With a targeted case load of 160 TJR cases annually, the short-stay (three days) program is ideally suited for the "well" patient who can be ambulatory on the same day as the surgery.

In 2009/2010, the surgical program will

be allocated \$1.4M in wait-time funding by the Ministry of Health and Long-Term Care. The largest upfront capital cost, at \$433,000, is for basic surgical instrumentation and parallel reprocessing equipment.

"This is a new way of business and new model for efficient care. It's about thinking outside the box and producing true innovation in health care," says Dr. Peter Brown, medical director for the joint Hotel Dieu/Kingston General Hospital surgery program.



Physiotherapist Melissa Magtanong works with a patient in the new TJR program.

Targeting heart disorders that strike suddenly, fatally

Getting to the heart of cardiac diseases that can be instantly and unpredictably fatal is the focus of the new Inherited Heart Rhythm Disease Clinic, one of only a handful of such cardiac clinics in Canada.

The clinic targets patients and their families who need investigation for heart diseases with a genetic basis. Called Sudden Arrhythmia Death Syndromes (SADS), these diseases can go undetected because symptoms such as recurrent fainting spells can be misdiagnosed or undertreated.

"Deaths of young people may be put down to 'natural causes' or 'unexplained' because often there is nothing to see at

Hotel Dieu Hospital is defined by its excellence in outpatient care across a spectrum of highly specialized services that include orthopedics, pediatrics, ophthalmology, diabetes education, breast assessment, day surgery, urgent care and mental health programs. Our affiliation with Queen's University and our partnership with our fellow university hospitals support our role as this region's outpatient care teaching hospital. In that role we strive every day for world-class patient care, teaching and research.



Dr. Chris Simpson uses world-class technology in a new inherited heart rhythm disease clinic.

autopsy,” says Dr. Chris Simpson, medical director of the joint cardiac program at Hotel Dieu and Kingston General Hospital and chief of cardiology at Queen's University. “The defect, in fact, is often only evident at the molecular or DNA level.”

The clinic has access to world-class procedures and testing including electrophysiology testing and advanced mapping, genetic testing and other leading-edge procedures. It brings together arrhythmia specialists, a pediatric cardiologist, a social worker, geneticists and genetics counselors in one setting at the same time.

Installing advanced CT scanning technology

Hotel Dieu Hospital unveiled a 320-slice computed tomography (CT) scanner this year, powerful imaging technology that lets radiologists capture images of blood flow and organ function in less than a heartbeat.

“The Toshiba Aquilion ONE scanner can scan the entire heart in less than 0.5 seconds and produce exquisite two- and three-dimensional images,” says Dr. Annette McCallum, acting head of diagnostic radiology at Hotel Dieu, Kingston General Hospital

and Queen's University.

Shaped like a giant white doughnut, the \$2.5 million scanner can image “slices” as big as 16 centimetres (6.3 inches), wide enough to capture most of the body's organs in a single rotation of the gantry.

For patients, the scanner's considerable advantages include faster acquisition of images, along with decreased doses of radiation and intravenous contrast.

In some cases, the scanner will complement and possibly replace more invasive imaging procedures. The technology holds particular potential for cardiac and stroke studies since it can detect subtle changes in even minute blood vessels.

Conducting eye-opening research

Maybe one thing is more precious than our own vision—that of our children. That's why research published this year by pediatric ophthalmologist Dr. Brian Arthur served as a huge wake-up call to parents who assume their kids have perfect eyesight.

During a year-long study, about 300 junior kindergarten students had their eyes photographed by a digital photo-screening camera designed to capture amblyopia or “lazy eye.” Dr. Arthur, the only pediatric ophthalmologist in Canada conducting this kind of research, then sought to corroborate the camera data with clinical eye exams.

The study was a success. When the clinical results were set against the camera data, the corroboration rate was 95 per cent.

Some parents in the study were flabbergasted to discover how blind their child actually was in one eye. Parents see their child playing sports or doing homework with no apparent visual difficulty. In fact, the child



Vanessa Wilkening is grateful that innovative eye research caught her daughter's lazy eye.

is getting by with only one good eye.

“That's a good argument for reinstating vision screening in primary grades and the camera technology lets us do that very efficiently,” says Dr. Arthur. “We need to catch a lazy eye early to fix it. Vision screening for our kids should fall into the same category as immunizations and dental screening—it should be mandatory.”

Walking the safety talk

Patient safety continues to be front and centre at Hotel Dieu Hospital, a strategic priority that took concrete form this year as:

- Public reporting of Patient Safety Indicators...that is now mandatory in Ontario hospitals and that means the public can check our website for rates of infections and hand hygiene compliance.
- A Patient Safety Council...that tackled safety issues such as monitoring patient falls, medication reconciliation, use of flash sterilization, patient education about safety and hand hygiene.
- Patient Safety Leadership Walkabouts... in which hospital leaders formally visited and communicated with front-line staff to learn more about patient safety issues.

- The “SAFE Reporting” tool...which enables staff, physicians and learners to electronically report events that may adversely impact patients, employees or the organization. The tool makes it possible to follow up events quickly and to maximize the chance of organizational learning.
- Hospital-wide patient safety education... that is delivered through new signage, posters and brochures, covering everything from hand hygiene and cough etiquette to the best ways for patients and their families to get involved in their health care.
- Online patient safety training for Hotel Dieu staff... through a newly implemented e-learning system that allows the hospital to assign online safety courses on topics ranging from hand hygiene to laser safety in the OR.

Getting greener by the day

Hotel Dieu Hospital reaped the benefits of its ongoing “greening” efforts this year, hauling in a rebate of almost \$81,000 from its local energy distribution company after replacing and upgrading about 14,000 fluorescent light fixture, installing 325 LED exit lights signs, and also installing variable speed motors on pumps and air handling equipment.

The retrofit will reduce electricity use by about 500,000 kilowatts a year, which translates into \$18,000 annually. It was part of an overall \$5 million energy-smart renovation project that included significant projected savings for a reduction in the use of steam heat. Instead, the hospital installed a 250-ton heat-recovery chiller, a more efficient method of heating. Hotel Dieu can now cut back on costly steam use by 60 per cent.

“We want to get the most out of this project,” says Ted Darby, vice-president planning for Kingston’s university hospitals, including Hotel Dieu. “That way we can ensure our dollars go to our first priority—patient care.”

Learning from the best and brightest

Excellence in training the physicians of the future was recognized twice this year as Hotel Dieu Hospital scored prestigious provincial awards from PAIRO (Professional Association of Internes and Residents).

Ophthalmologist Dr. James Farmer won a PAIRO Excellence in Clinical Teaching Award, which honours remarkable clinicians who teach and inspire Queen’s University medical residents.

“As physicians we’re always teaching—our patients, our students and residents, our staff and colleagues and ourselves,” he says. “I’m very fortunate to be part of a university and department that engender a commit-



*Ophthalmologist and PAIRO Award winner
Dr. James Farmer*

ment to teaching that has encouraged me to achieve this.”

In winning the PAIRO Residency Program Excellence Award, the Anesthesiology postgraduate program at Hotel Dieu Hospital, Kingston General Hospital and Queen’s University was deemed outstanding in a field of 200-plus residency programs across six medical schools in the province.

“Resident training and education is considered by our staff to be our primary academic mission,” says Dr. Joel Parlow, head of Anesthesiology at Hotel Dieu, KGH and Queen’s. “Our members have dedicated their time and effort to ensuring an excellent experience for trainees at all levels.”



Dr. David Pichora
Interim CEO

This past year was one of many challenges, including an unexpected transition in leadership when Executive Director Hugh Graham made the difficult decision to retire due to health concerns. We are grateful that his health has now improved and that our patients continue to benefit from everything he accomplished over his 25 years here.

We were also challenged by the task of achieving and maintaining financial stability while continuing to deliver quality care. In a process marked by diligence and creativity, we found the solutions needed to deliver a balanced budget.

Along with the challenges, though, came opportunities.

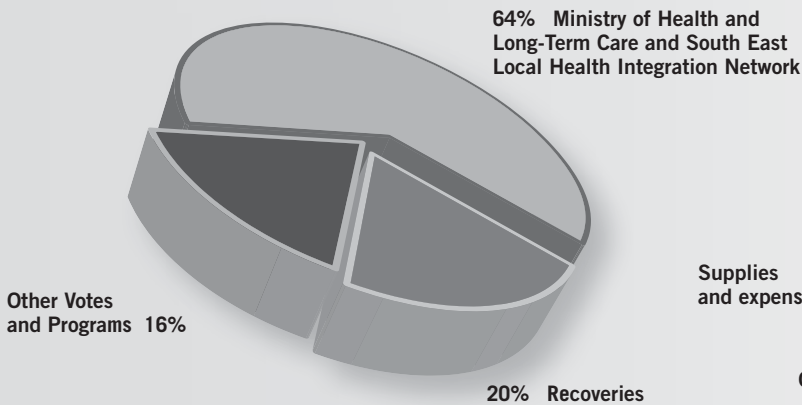
We launched an innovative short-stay total hip and knee replacement program, a fast-track model that could revolutionize the delivery of surgical care in our region. We became the first standalone outpatient academic hospital in Canada to operate a 320-slice CT scanner, and we introduced a clinic specializing in inherited heart rhythm disease, one of only a handful of such specialized cardiac clinics in the country.

And we saw the first wave of outpatient clinics transfer permanently from Kingston General Hospital to Hotel Dieu as part of a major capital expansion project that will cement our role as the region’s specialized outpatient centre.

We continue to embrace the challenges and opportunities that define our hospital, and keep in mind the touchstones that always guide us: quality, safety and the mission and values of the Religious Hospitaliers of Saint Joseph.

FINANCIAL REPORT

Hotel Dieu Hospital Fiscal 2008 / 2009 Hospital Revenues



Revenues

Ministry of Health and Long-Term Care and South East Local Health Integration Network	\$50,148,000
Recoveries	15,510,000
Other Votes and Programs.....	12,650,000
Total	\$78,308,000

Expenditures

Compensation.....	\$47,626,000
Drugs/Medical Supplies	5,456,000
Supplies and expenses.....	17,364,000
Other Votes and Programs.....	12,672,000
Total	\$83,118,000
Excess of expenditures over revenues.	(\$4,810,000)

2008/2009 Board of Directors

Board of Directors

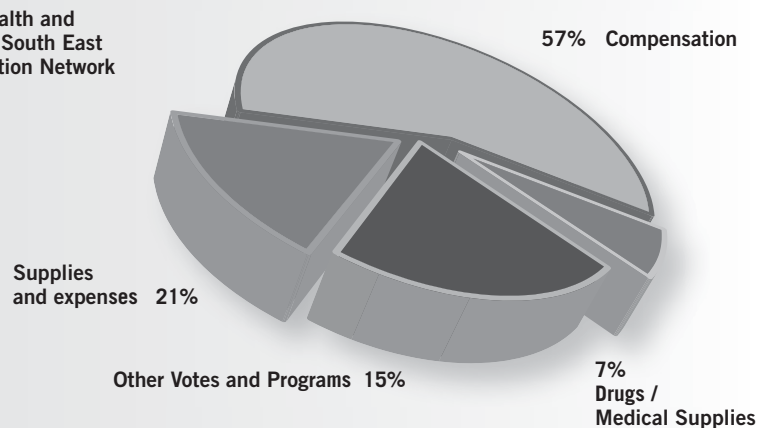
Sherri McCullough - Chair
Eric Bennett
Robert Boucher
George Caron
Alan Cosford
Michael Hickey
Sister Joan Kalchbrenner
Rodney King
Mary Smith
Monna Splinter
Michael Springer
Elizabeth Wilson

Ex Officio Members

Peter Candlish, Past Chair of the Board
Dr. David Pichora, Interim Chief Executive Officer
Dr. Dale Mercer, Interim Chief of Staff
Dr. David Walker, delegate of the Principal of Queen's University
Deacon Richard Neary, delegate for the Archbishop of the Archdiocese of Kingston
Dr. Paul Belliveau, President of the Medical Staff
Doreen Turner, President, Volunteer Services
Dr. Louis T. van Zyl, Vice-President of the Medical Staff

A complete set of audited financial statements is available by calling 613-544-3400 extension 2187.

Hotel Dieu Hospital Fiscal 2008 / 2009 Hospital Expenditures



Activity Snapshot

Ambulatory Clinic Visits

Medical Clinics	22,685
Surgical Clinics	50,696
Ophthalmology Clinic	50,109
Ear, Nose and Throat Clinic	13,785
Children's Outpatient Centre (COPC)	13,631
Child and Adolescent Psychiatry Clinics	4,591
Adult Psychiatry Clinics	9,022
Family Court Clinic	472
Child Development Centre (CDC)	11,544
Family Medicine Centre	26,979
Other (e.g. Pre-Surgical Screening)	23,493
Total Clinic Visits	227,007
Urgent Care Centre Visits	52,925
Day/Night Visits	13,402
(includes Day Surgery, Endoscopy and GI Functions)	
Operating Room Cases	7,316

Other Clinical Procedures

Electrocardiogram (ECG) tests	17,749
Electroencephalography (EEG) tests	52
Radiology exams	40,257
Bone Density	1,253
Mammography	9,833
CT Scans	11,738
Ultrasound exams	11,619
Electrodiagnosis Exams	2,323
Speech Therapy attendances	1,794
Audiology visits	8,042
Other Cardiology visits (holter & echo)	6,174
Inpatient Psychiatry admissions	999
Total Clinical Procedures	111,833
Total Visits to Hotel Dieu Hospital	412,483

Our Mission

We learn, we discover, we care for patients and each other.

Our Vision

Guided by our history, driven by the future, committed to our communities: the most highly valued and respected academic health centre.

Our Values

We provide respectful, compassionate and quality care. Integrity and honesty govern our actions. Our work environment is equitable and co-operative. We respect individuals, promote teamwork and expect accountability.

We are leading acute and cancer care

Drill tool revolutionizes orthopedic surgeries

A revolutionary new tool developed by the Human Mobility Research Centre – a world-class research partnership between Kingston General Hospital and Queen’s University – has increased the accuracy and accessibility of specialized orthopedic procedures designed to benefit younger, more active patients.

Using three-dimensional computer models from a patient’s CT scan, researchers invented a guide to create a surface-matched plastic drilling template to exactly fit the patient’s bone structure. These customized forms enable surgeons to more precisely

and accurately align and place the metallic implants used in hip resurfacing and other related orthopedic surgeries.

“The challenge with hip resurfacing and related surgeries is the precise placement of the metal implant, which is critical to prevent undue strain on the remaining healthy bone structure,” explains orthopedic surgeon Dr. John Rudan. “This form of computer-assist surgery allows for better reproducibility and a reduction in errors.”

To date the drill template has been successfully used in nearly 50 hip resurfacing procedures at KGH.

New model aims to improve care environment

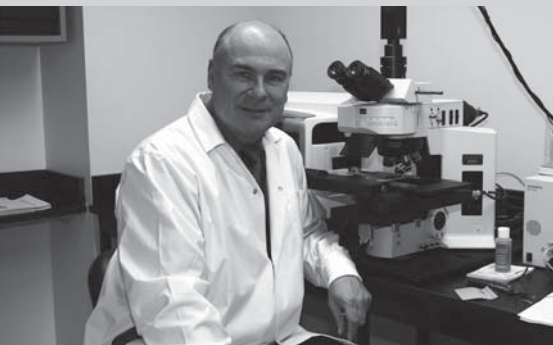
A multidisciplinary group of Kingston General Hospital staff are in the midst of designing a more patient-centered, family-focused model of delivering care.

The Interprofessional Collaborative Practice Model aims to use the right mix of skills to provide the best care to address a growing number of patients. The model will support health-care providers to work to their full scope of practice, reduce overlap, standardize processes and roles and improve communication among departments. A dedicated team is determining what problems need to be



Orthopedic surgeon Dr. John Rudan (right) uses the drill template.

Kingston General Hospital is affiliated with Queen's University and serves more than 500,000 people in southeastern Ontario. We provide an array of specialized acute inpatient and ambulatory clinical services and are home to the Cancer Centre of Southeastern Ontario. KGH is dedicated to compassionate, high quality health care in a dynamic and robust academic research environment.



Hospital Research Chair Dr. Jeremy Squire

solved, reviewing what KGH's current care team looks like and identifying existing issues and challenges related to patient care. The new model will be piloted in the fall.

First-ever research chair recruited to KGH

A world renowned cytogeneticist is Kingston General Hospital's first-ever Research Chair in Molecular Pathology in the Department of Pathology and Molecular Medicine.

Dr. Jeremy Squire, who looks for genetic abnormalities that might help uncover the onset, cause and progression of cancer as well as the most appropriate and effective forms of treatment or therapy, will foster and develop interdisciplinary research collaborations between KGH, Queen's University and other academic health science centres.

"Close interactions between basic scientists and clinicians from various disciplines such as pathology, oncology and genetics help create a very dynamic environment," explains Dr. Squire. "By bringing these multidisciplinary teams together, we can apply our research discoveries directly to patients, where it will have the greatest impact and opportunity for further advances."

New code to guide behaviour

Kingston General Hospital hopes to promote an equitable and respectful work environment with its new Code of Behaviour.

More than 100 people from all parts of KGH contributed to the development and implementation of the hospital-wide Code of Behaviour, better known as *Be Real*. The policy has four core principles (respect, equality, accountability and leadership) and expectations for behaviour for anyone who works in, or with, the hospital.

Since the program was launched in October 2008, more than 800 staff have attended dozens of sessions on the code and its principles led by staff facilitators from various disciplines across the hospital.

KGH is now recognized as a leader in this area. Hotel Dieu Hospital is using the *Be Real* model and more than 50 organizations across Ontario have replicated the core principles and the policy.

Cancer patients benefit from new radiation technology

A new and innovative technology to deliver radiation treatment is offering cancer patients increased comfort and convenience.

The Cancer Centre of Southeastern Ontario at Kingston General Hospital is now using a high-tech device – the first of its kind to be used in North America – to deliver high dose rate brachytherapy radiation treatment for women with gynecological cancers. Brachytherapy is a type of radiation treatment which is delivered internally to a body cavity or tissue, by inserting radioactive isotopes. Brachytherapy has been used at the cancer

centre for many years but, in the past, low dose rate radioactive isotopes were used meaning treatment had to occur over several days.

With the new technology, using high dose rate radioactive isotopes, the treatment can be given much faster using high dose rate radioactive isotopes and the patient does not require hospitalization.

"Low dose treatment was certainly effective but it was inconvenient and uncomfortable for the patient and it was also expensive because of the hospital care required," says radiation oncologist Dr. Wendy Shelley. "Now we are able to offer an equally effective treatment that is reduced from days to minutes."

Hospital recognized as learning leader

Kingston General Hospital was recognized with the 2008 Agency Recognition Award for Excellence in Supporting Nursing Education for its commitment to creating an outstanding learning and professional practice environment for nursing students.

The Council of Ontario University Programs in Nursing award acknowledges the efforts of KGH registered nurses and other health-care professionals in providing ongoing support of nursing students. KGH was nominated for several formal and informal learning initiatives including mentorship of students and a positive professional practice culture.

"As a teaching hospital, our goal is to foster a mutually supportive relationship and an environment that promotes teaching and learning and allows us to remain at the forefront of patient care, professional excellence and health-related research," says Eleanor Rivoire, Chief Nursing Executive and Senior Vice-President of Patient Care Programs.



Patient Relations Volunteer Kid Tauchid visits with a newly admitted patient.

Volunteers help bridge communication gap

A new volunteer outreach initiative is providing patients with quick and easy access to vital information regarding their hospital stay.

Kingston General Hospital debuted its Patient Relations Volunteer Program in January 2009 to enhance patient education during what can sometimes be an anxious and frightening experience. Specially-trained volunteers visit all newly admitted patients within their first 24 hours in hospital.

Patients are provided with a toolkit that includes information on patient safety, proper hand hygiene and what they might expect during their treatment.

The program, believed to be the first of its kind in Ontario, is having a positive impact on patients and their families. "New patients are generally unaware about the hospital and how it all works," explains Director of Volunteer Services Jill Holland-Reilly. "Our volunteers provide a valuable introduction to KGH and offer appropriate resources and support to help them adjust to their new and often unfamiliar environment."

Hospital recognized for patient safety initiatives

Kingston General Hospital has been singled out for its ongoing commitment to patient and staff safety.

KGH's efforts to track and test mattresses was highlighted in the Ontario Hospital Association's 2008 patient safety guidebook, *Patient Safety: Leading Practice in Ontario* –

Improvements, Ideas and Innovations. Now, all mattresses can be inspected and tracked regularly to ensure consistent cleaning and replacement, a move that helps decrease the spread of hospital-acquired infections.

Significant time savings and enhanced patient safety resulting from the hospital-wide introduction of the wireless Vocera communication badge earned KGH a second entry. When faced with a situation where a patient is at immediate risk, staff can quickly call for help with a voice command – and without having to leave the bedside.

KGH's safety initiatives were two of 46 included in the guidebook that is shared with other health-care facilities in Ontario in hopes of inspiring innovation and sharing best practices.

ICU nutrition practices are 'Best of the Best'

Kingston General Hospital's intensive care unit is leading the way in ensuring critically ill patients receive the very best nutrition therapies.

KGH was awarded a second-place ranking in an international audit of 157 ICUs in 22 countries that measured how effectively caregivers ensure best nutrition care.

Participants collected data over a three-month period and compared their performance against ICUs within their own country or region, against all ICUs in the database as well as against *The Canadian Clinical Practice Guidelines for Nutrition Support in Mechanically Ventilated Critically Ill Patients*, authored incidentally by KGH's Clinical Evaluation Research Unit Director Dr. Daren Heyland, research dietitian Rupinder Dhaliwal and KGH Critical Care Program Medical Director Dr. John Drover.

Attaining a "Best of the Best" rating among ICUs worldwide is a significant achievement for KGH, says Dr. Drover. "We've shown through this survey that improved nutrition can make a difference in patient outcomes. It is exciting and gratifying to learn that KGH is among the centres leading the world in nutrition therapy inside the intensive care unit."



Leslee Thompson
President & CEO

It is a great honour to have been appointed by the Kingston General Hospital Board of Directors as the hospital's 37th President and CEO.

Our organization is in a period of transition and there is no question that the past year has been challenging for everyone. I am of the view, however, that adversity can be a valuable teacher and a catalyst for positive change. Looking forward, I believe we will be defined not by the circumstances we are in today, but how we choose to respond and lead from here.

Change won't come easily, but I am confident that with the talent, determination and commitment of the many individuals and teams I have met over the past few months, we will be successful, not only in delivering on our Performance Improvement Plan, but in positioning KGH for a very strong, vibrant future.

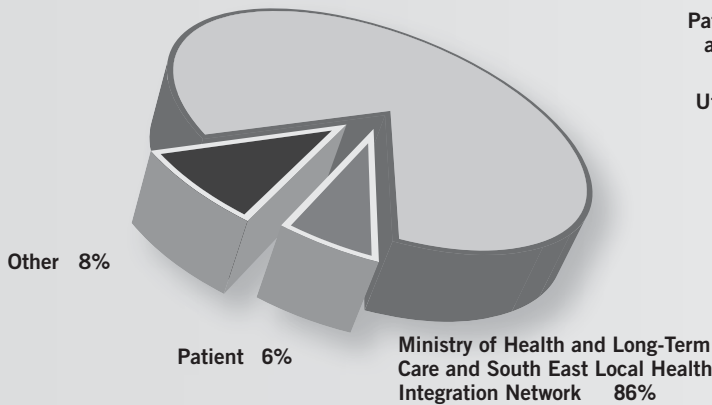
We know that many others - especially our patients and their families - are counting on us to be the best we can be. As a comprehensive academic hospital we have an important leadership role to play in fostering leading edge clinical care, teaching and research activities. I think you will agree by reading our stories, that KGH is an organization that is already changing the face of health care for the better.

Since I joined KGH, I have seen firsthand this innovation and expertise at work and I congratulate all who have taken us to this point. Thanks also to our many partners and communities who we will continue to collaborate with on our journey forward.

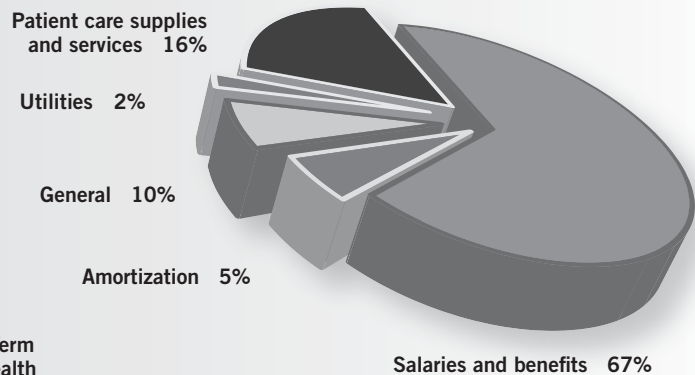
And now, let the next chapter of KGH history begin!

FINANCIAL REPORT

**Kingston General Hospital
Fiscal 2008 / 2009 Hospital Revenues**



**Kingston General Hospital
Fiscal 2008 / 2009 Hospital Expenditures**



Revenues

Ministry of Health and Long-Term Care and South East Local Health Integration Network	\$317,969,000
Patient	20,820,000
Other	31,995,000
Total.....	\$370,784,000

Activity Snapshot

Admissions	17,254
Ambulatory Scheduled Visits	100,169
Average Length of Stay (days)	7.97
Births	2,131
Cancer Centre Scheduled Visits/Treatments	70,141
Emergency Visits	44,992
Open Heart Cases	599
Operative Cases	8,488
Pacemakers	350

2008/2009 Board of Directors

William Richard Chair, Board of Directors & Chair, Senior Leadership Assessment & Compensation Committee	Elaine Forshaw Timo Hytonen James Holsworth * President, KGH Foundation
Maureen Ball, Chair Governance Committee & Chair, Nominations Sub-Committee	Jan Montgomery Donna Segal Leslee Thompson * President & Chief Executive Officer
Mohamed Bayoumi Dr. Paul Belliveau * President, Medical Staff	John Trousdale Peter Tucker Dr. David Walker * Representative of the Principal, Queen's University & Dean, Faculty of Health Sciences
Annette Bergeron, Chair, Ad Hoc Redevelopment Committee & Chair, Research & Education Committee	David Yen * Vice President, Medical Staff Dr. David Zelt * Interim Chief of Staff & Chair, Medical Advisory Committee
Barry Blay, Chair, Audit Committee	
Tom Buchanan	
Carol Clemenhagen	
Annastasia Cliffe * President, KGH Auxiliary	
Chris Cunningham Chair, Resources Committee	
Richard Fleming, Chair, Quality of Patient Care Committee	*ex-officio status

Expenditures

Salaries and benefits.....	\$260,799,000
Patient care supplies and services	63,423,000
Utilities	7,823,000
General	38,020,000
Amortization.....	18,582,000
Total.....	\$388,647,000
Total Deficit.....	(\$17,863,000)

Our People

Staff

Full and Part-Time (as of March 31, 2009)

Interns & Residents	370
Nursing	1,199
Management & Administration	373
Clerical & Support	1,303
Professional & Paramedical	537
Total	3,782

Medical Staff

Full and Part-Time (as of March 31, 2009)

Attending Staff	349
Term Attending	18
Associate Staff	132
Clinical Associate Staff	21
Consultant Staff	8
Registered Nurse (Extended Class) Staff	11
Active Midwifery Staff	8
Honorary Staff	16
Total	563

A complete set of audited financial statements is available by calling 613-548-1378.

Our Mission

Trusting in Providence and strengthened by the spirit and tradition of our Founders, the Sisters of Providence of St. Vincent de Paul, we enhance the quality of life by meeting the physical, emotional, social and spiritual needs of each person.

We work with our partners to innovate and excel in education and research.

We treat each person with respect, dignity and compassion.

Our Vision

Providence Care will lead the way in compassion & discovery.

Our Values

Respect & Dignity – We believe in the inherent worth and excellence of all people.

Compassion – We are sympathetic and conscious of the needs of others, and have a deep desire to respond.

Stewardship – We embrace our role in the responsible management of all that is entrusted to our care.

We lead the way in compassion & discovery

Enhancing quality of life

Jim Cuddy, a Complex Continuing Care (CCC) patient at Providence Care's St. Mary's of the Lake Hospital, had long been dreaming of taking a ride on a motorcycle.

When Debbie Firth, a nurse at St. Mary's heard of Jim's dream wish, she found a way to make it happen.

The fact that Jim has little to no mobility in his arms and legs didn't stop Debbie, it just meant she had to find a different way. So she called her friend, Paul "Trapper" Cane.

Accompanied by a large squadron of about two dozen bikes ridden by Canadian war vets and supporters, Trapper arrived on his motorcycle with sidecar at St. Mary's.



Jim Cuddy rides shotgun with Trapper Cane.

Patients and staff were there to see the veterans, their motorcycles, and Jim's departure. Many nurses, some joining in on the ride, sported shirts that said "Cuddy's Cougars," commemorating Jim's ride.

St. Mary's Occupational Therapist, Lexi Bulak, and Orthotist, Rob Merritt, worked with Trapper to adapt the sidecar. Safety harnesses and head support which are not typically included in sidecars were added, allowing Jim to ride comfortably and safely.

Maureen McGinn, Program Manager of St. Mary's CCC program explained why it was so important to get Jim out on a motorcycle: "Like everybody, our patients have goals and aspirations and part of providing patient-centred care is enabling them to fulfill those goals and aspirations."

Jim's motorcycle led the pack of bikers leaving St. Mary's for a scenic drive along Lake Ontario.

Living our values

At Providence Care we are focused on the development of the individual and we are committed to providing the best opportunities and support to staff who have a passion to learn.

The Providence Care Foundation Staff Bursary is a fund that is in place to support professional development and training for

Providence Care is Southeastern Ontario's leading provider in complex continuing care, geriatric medicine, long-term care, palliative care, rehabilitation and specialized mental health care.

Our new strategic plan will guide us through 2009-2012 and is built on five strategic directions: Enhancing Quality of Life; Living Our Values; Fostering a Learning Environment; Strengthening Our Relationships; Enhancing Health Systems Efficiency and Effectiveness



Carol Sutherland and Carol Mieras gather together at Recovery Fest, a celebration at Mental Health Services that brings together clients and staff.

all employees at Providence Care. This year, the Foundation Board voted unanimously to double the amount made available for the program from \$15,000 annually to \$30,000.

"We have some of the finest professional and support workers in health care here at Providence Care," says Doug Hogeboom, Chair of the Providence Care Foundation. "We must do all that we can to support their professional development and continue to improve resources that enable staff to best serve the needs of our clients, residents and patients."

Providence Care is defined by its compassionate care and committed to treating everyone with respect and dignity. The Providence Care Foundation contributes through investing in resources which enable staff to meet the needs of residents, patients and clients.

"The primary objective of the staff education bursaries is to enhance client care

through a well-trained workforce," Dan Legault, Chief Development Officer of the Providence Care Foundation says. "But I hope our staff also see this program as an expression of the Foundation's support and value for each one for them as individuals and professionals."

Fostering a learning environment

It was a celebration when Ontario's Chief Nursing Officer Vanessa Burkoski presented the first group of post graduate mental health nursing residents with their certificates of completion.

The Mental Health Nursing Residency Program is a specialized three-month postgraduate residency program, developed by Providence Care and an expert team of mental health nursing professionals.

Twenty nursing students graduated in winter 2008 from the inaugural residency program, including four students who completed their residency at Providence Care's Mental Health Services site.

"This first cohort of nurses with specialized education in mental health and addictions will serve as an inspiration to other nurses desiring to practice in this important field of nursing," Burkoski said.

This innovative post graduate residency program enables nurses to build on their knowledge and understanding of mental health. The residency program has provided the foundation for a network of nurses dedicated to excellence in mental health care.

"The residency program provided an excellent opportunity to new grads such as myself," said Chris Veley RN, BScN Forensic Rehabilitation. "All components of the program had one major goal; benefitting

the clients we care for. Personally, I gained a sense of confidence in my ability to provide client centred care in my daily practice."

Gillian Strudwick, RN, BNSc, Geriatric Psychiatry agrees. "The Mental Health Residency Program gave me valuable knowledge and direct experience that helped me to discover and improve critical skills that allow me to be the best nurse I can be."

The Mental Health Nursing Residency program is a collaboration between the Ministry of Health and Long-Term Care, three academic partners, and five mental health sites across Southeastern Ontario.

"Working together with our mental health partners and the Ministry to create this program will attract new mental health nurses to this rewarding and challenging field," said Allen Prowse, Providence Care's Vice President of Mental Health and Site Administrator at Mental Health Services.

"The success of the program and the enthusiasm from our first group of nursing residents certainly bodes well for the mental health sector."

The graduating class were recognized at a special ceremony on December 4th at the Whitby Mental Health Centre.

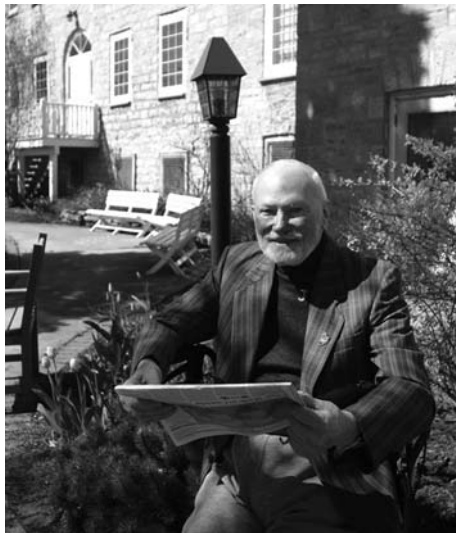
Strengthening our relationships

Nurse Practitioners play a vital role in long-term care and bring a collaborative approach to health promotion, disease management, and treatment of illness.

In the long-term care home setting, the availability of a nurse practitioner can decrease the number of visits by residents to the emergency department and allow more residents to remain in their familiar surroundings while receiving quality care.

NPs are able to diagnose and treat a range of health problems; treat acute and chronic conditions; prescribe medications and perform other treatments.

Providence Manor is working in partnership with the South East Local Health Integration Network (LHIN) and other long-



The new Nurse Practitioner Team will enhance the quality of life for residents at Providence Manor.

term care providers in the region as part of a project through the Ministry of Health and Long-Term Care to fund a Nurse Practitioner (NP) Led Long-Term Care team.

The positive impact of the NP team will be felt not only by residents, but for family caregivers, physicians, and emergency room staff who benefit when problems are assessed and treated bedside.

“Aging at home continues to be an important strategy supporting our overall mission of better health care in the South East LHIN,” says Georgina Thompson, Chair of the South East LHIN Board of Directors. “In improving our health care system by providing people with access to the care they need in the right place, we are also helping to relieve some of the pressure within our hospital system.”

Enhancing health systems efficiency and effectiveness

Exciting technology is in place within Providence Care. The new Picture Archiving and Communications System (PACS) allows images and reports to be simultaneously accessed by multiple people at St. Mary’s of the Lake Hospital and Mental Health Services (MHS).

Traditionally x-rays are obtained and stored on film, meaning departments share these film images and shuttle them from one site to another. The new PACS allows images to be viewed on computers via a secure website or through PCI in Meditech, resulting in the availability of information virtually anywhere across St. Mary’s and MHS at any time.

The benefits are numerous.

- Improved patient care - faster report turn around and elimination of delays through wait times for films.
- Access – physicians and health-care providers will have almost immediate access to images after exam completion on any PC connected to our computer network.
- Quality – computed radiography (CR) equipment produces superior images.
- Cost – storage requirements and environmental concerns of chemical processing and disposal are reduced.
- Time savings – reduced film and file handling and film storage.

“The turnaround time for reports and the access to patient records has improved considerably as a result of PACS,” says Tanya McDonald, Medical Radiation Technologist & PACS Administrator. “That ultimately has a positive impact on patient care.”

Providence Care continues to be a leader in specialized health care across Southeastern Ontario and our new PACS will allow the sharing of diagnostic images with other hospitals in our region. Over the next year we will look to join an even larger shared image repository to include 21 hospitals in central and Southeastern Ontario.



Dale Kenney
CEO

Providence Care will lead the way in compassion and discovery -- this is our new Vision, and it is exciting to share it broadly through this year’s annual report.

We have adopted this Vision for many reasons. First, it ties back to our Founders, the Sisters of Providence of St. Vincent de Paul, and describes how we carry out our Mission with compassion – following in the Sisters’ tradition.

The Vision also reflects the input and values of our Providence Care community today. Staff, clients, families, volunteers, service partners, and so many others participated in the development of our Vision, Mission and Values statements and new 2009-2012 Strategic Plan. Throughout their feedback, “compassion” was a consistent theme, and “discovery” reflected how we continue to evolve our programs and services to meet the needs of those we serve. Discovery also speaks to how we grow and work together.

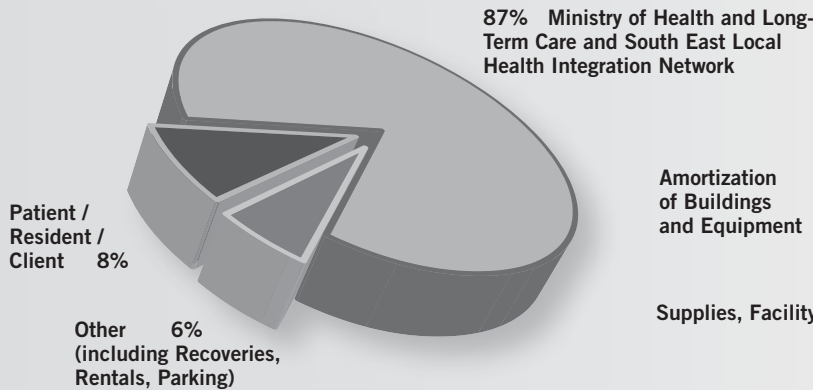
While other organizations may have vision statements that describe an end goal or a specific target, Providence Care’s Vision is different. It speaks to how we will deliver care in the years to come, and our commitment to the people of Southeastern Ontario.

The stories in these pages are a celebration of everyone who shares our Vision, and they demonstrate how Providence Care enhances the quality of life, which is core to our Mission.

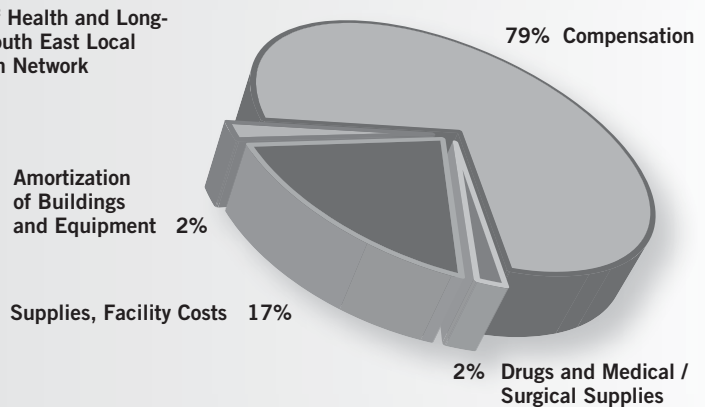
Thank you for supporting Providence Care. Together we are leading care, changing lives.

FINANCIAL REPORT

**Providence Care
Fiscal 2008 / 2009 Hospital Revenues**



**Providence Care
Fiscal 2008 / 2009 Hospital Expenditures**



Revenues

Ministry of Health and Long-Term Care and South East Local Health Integration Network	\$106,203,000
Patient / Resident / Client	6,908,000
Other (incl Recoveries, Rentals, Parking)	9,617,000
Total Operating Revenue	\$122,728,000

Our People

Clinical, Administrative and Support Staff	1,773
Physicians, Residents and Clinical Clerks	240
Volunteers	1039
(who provided 61, 946 volunteer hours)	

Providence Care is a major centre for teaching and research. All undergraduate medical students at Queen's University are exposed during their training to teaching within Geriatric Medicine, Physical Medicine and Rehabilitation, Palliative Care, Complex Continuing Care and Mental Health Services.

2008/2009 Board of Directors

Jim Barton, Chair Bath & Lennox & Addington Counties	David Moore Kingston and Frontenac County
J. Peter McGeer, Vice Chair Kingston and Frontenac County	Larry Norman Catholic Health Corporation of Ontario
Glen Wood, Vice Chair Kingston and Frontenac County	David Publow Brockville and Leeds and Grenville Counties
Dale Kenney, President & CEO Dr. Glenn Brown, Chair, Department of Family Medicine, Queen's University	Dr. John Puxty, Chief of Staff and Chair Professional Advisory Committees
Pam Carr, Kingston & Frontenac County	Dave Reynolds, Napanee and Lennox & Addington Counties
Susan Freitas Kingston and Frontenac County	John Roderick Kingston and Frontenac County
Brian Hogan Kingston and Frontenac County	Paul Spooner Bath & Lennox & Addington Counties
Ken Horricks Belleville and Prince Edward Hastings Counties	Mary Woodman Kingston and Frontenac County
Sister Sheila Langton Catholic Health Corporation of ON.	<i>Founded by the Sisters of Providence of St. Vincent de Paul, Providence Care is today sponsored by the Catholic Health Corporation of Ontario.</i>
Peter Merkle Kingston and Frontenac County	

Expenditures

Compensation	\$97,708,000
Supplies, Facility Costs	20,700,000
Drugs and Medical / Surgical Supplies	2,343,000
Amortization of Buildings and Equipment	2,350,000
Total Operating Expenditures	\$123,101,000
Excess of Expenditures over Revenue	(\$373,000)

Activity Snapshot

St. Mary's of the Lake Hospital site

Physical Medicine and Rehabilitation, Complex Continuing Care, Palliative Care, Specialized Geriatric Services

Inpatient Admissions	747
Outpatient Visits	37,987
Community/Outreach Visits	1,469
Regional Community Brain Injury Services (hours)	8,540

Mental Health Services site

Adult Treatment & Rehabilitation, Forensic Psychiatry, Geriatric Psychiatry

Inpatient Admissions	239
Outpatient Visits	10,126
Community/Outreach Visits	31,683

Providence Manor site

Long-Term Care

Resident Admissions	107
Adult Day Programs	5,152
Attendant Care Outreach/Endymion Supportive Living Programs (hours)	47,799
Total Providence Care Outpatient and Community/Outreach Visits	86,417
(plus 56,339 hours)	

A complete set of audited financial statements is available by calling 613-548-2222 extension 2158



UNIVERSITY HOSPITALS
KINGSTON FOUNDATION
Our Hospitals. Our Health. Our Future.

The Campaign

The \$70-million Together We Can campaign is the largest and most important health care fundraising initiative in the history of Southeastern Ontario. Led by the University Hospitals Kingston Foundation, the campaign will raise money for the redevelopment of our hospitals, purchasing of equipment and the funding of medical research and staff education. Can we change tomorrow's health care?

Together We Can.

Our Vision

Inspiring a culture of giving, for the health of our community.

Our Mission

Supporting excellence in patient care, teaching and research at Kingston's hospitals by raising funds through partnership and philanthropy.

Our Values

Mutual Respect / Community Trust & Involvement / Excellence / Partnering for Success / Generosity

Together We Can

Foundation reports \$26 million in donor commitments to hospitals in 2008/2009

The University Hospitals Kingston Foundation, the fundraising arm of Hotel Dieu Hospital, Kingston General Hospital and Providence Care, is reporting a very successful year in 2008/2009.

The Foundation confirmed \$26 million in outright gifts and pledges from donors – including \$16 million from the commitment by the City of Kingston to the redevelopment of the university hospitals of Kingston.

“By any measure, this has been a successful year,” said Peter Merkley, Chair of the Foundation. “And this success is owed to the more than 12,000 people in Kingston and across Southeastern Ontario who made over 20,000 donations this year. We want to thank all of the people who have supported the campaign and our hospitals for their generosity.”

A highlight of the year was a \$2 million gift made by philanthropist Larry Gibson to the Cancer Centre expansion. “I know the story of cancer first hand and I have seen the need in our community. The staff at the

Cancer Centre is amazing, but they have to care for patients in a cramped, out-dated facility,” said Gibson, a cancer patient. “I want to help change that. I have been blessed with a successful business career, and I feel when you are successful in life you



Larry Gibson's gift of \$2 million made him the lead donor to the redevelopment of the Cancer Centre of Southeastern Ontario at KGH.

should share your blessings with others. I also believe when people work together they can make things happen. That's why I am making this gift to the Together We Can campaign. I ask you to make a gift as well.”

The Rose of Hope Catarauqui Golf Tournament Committee also made news by fulfilling its \$400,000 four year pledge to the campaign in just three years. The group has

University Hospitals Kingston Foundation is the fundraising arm for Hotel Dieu Hospital, Kingston General Hospital and Providence Care. Created in 2005, the Foundation raises money for programs, equipment, education and research that benefit the 500,000 people in Kingston and Southeastern Ontario served by the three teaching hospitals.

donated more than \$500,000 to cancer care over the 10 year history of the tournament.

Other lead gifts included commitments from TD Bank Financial Group, the Archdiocese of Kingston, the Town of Gananoque, the William J. Henderson Foundation and a number of local media organizations.

Funds donated this year were raised in a variety of ways, including gifts and pledges in person, by mail, online and over the phone. Third parties supported the Foundation by holding events, raffles, lotteries and more. Money was also raised through Foundation activities such as Hotel Dieu Hospital's Invitational Golf Tournament, Radiothon, KGH's Black Tie Evening and Providence Care's Founders' Dinner.

The campaign announced that it had reached \$50 million at the public launch June 11, 2008. Several hundred people attended launch events at the hospitals and Market Square in Downtown Kingston.

The campaign total rose to \$55 million at the end of September and \$57 million in early November. In early May, 2009, the Foundation announced it was at \$59 million.

Your donations at work

The University Hospitals Kingston Foundation's role is to raise donations. The three hospital foundations, the Jeanne Mance Foundation (Hotel Dieu Hospital), Kingston General Hospital Foundation and the Providence Care Foundation, have a fiduciary responsibility to disburse the funds in accordance with donor wishes and hospitals' needs. There were many ways that donors' contributions were put to good use in the past year. Earnings from endowment funds also helped support research, education and



The Busch family are donors because of the care they received at KGH. Ella and Zoe spent two and a half weeks in the Neonatal Intensive Care Unit when they were born. Today, they are six years old.

or equipment purchases at each of the three hospitals.

Redevelopment of hospital facilities continues to be a major priority in our fundraising. In 2008/2009, donors answered the call by making gifts and pledges to the redevelopment projects at KGH, Hotel Dieu Hospital and Providence Care. The KGH project, which began in July 2008, consists of 27 separate major phases of construction with both renovations and the creation of an additional 170,000 square feet of space. The Foundation received a number of leading gifts to KGH redevelopment projects, including the cancer centre and inpatient dialysis unit expansions. These donations

are being used to fund construction and equipment costs. Gifts made to Hotel Dieu Hospital's redevelopment project this past year will support the hospital's planned expansion and renovations, which will provide highly specialized clinics in one location for patients from across the entire region. Gifts made to redevelopment at Providence Care will support the construction of a new hospital that will bring together all of the care now provided at the St. Mary's of the Lake and Mental Health Services sites.

Gifts to patient care equipment at the three hospitals helped pay for blanket warmers, electric overhead lifts, weigh scales, wheelchairs, electric beds, fetal monitors



The Catholic Archdiocese of Kingston made a \$200,000 donation to support the redevelopment of Hotel Dieu Hospital and Providence Care – two proud Catholic traditions of serving the sick and needy in our community.

and many other items urgently needed to provide the best care for our patients. Best-in-class medical technologies that can only be described as life-altering were purchased, including diagnostic equipment that painlessly diagnoses childhood eye disorders.

Gifts to hospital-based research are helping to create a robust research environment that supports the translation of research from discovery, through clinical application, to knowledge synthesis, and dissemination hospital-wide and beyond. Initiatives in computer-assisted orthopedic surgery, hemophilia, trauma, sexual dysfunction, prostate disorders, gastrointestinal disorders, and neonatal research are earning international acclaim.

Gifts to staff education enabled physicians, nurses and other health care professionals to learn about the newest techniques and thinking in the delivery of patient care.



The Toronto-Dominion Bank made a \$250,000 donation to educate and train staff at Hotel Dieu Hospital, Kingston General Hospital and Providence Care.

Visit us online

Make a donation, watch a donor story video, learn more about redevelopment, tell your story...it's all on the Foundation's website. Get all the information you need by going to www.kingstonhospitalsfoundation.ca.

Or call the Foundation at 613-549-5452 or toll-free in Southeastern Ontario at 866-549-5452

A Planned Gift to our hospitals can benefit you and the community

Imagine a different kind of financial investment. One that helps your family, friends and neighbours receive the health care they need long after you are gone. A planned gift to our hospitals can give you that and more. Including our hospitals in your estate plans will leave a legacy to help prepare for a brighter future. Contact the Foundation for more information on Will & Bequests, RRSPs & RRI's, Securities, Life Insurance and more.



Peter Merkley
Foundation Chair



Denise Cumming
Executive Director

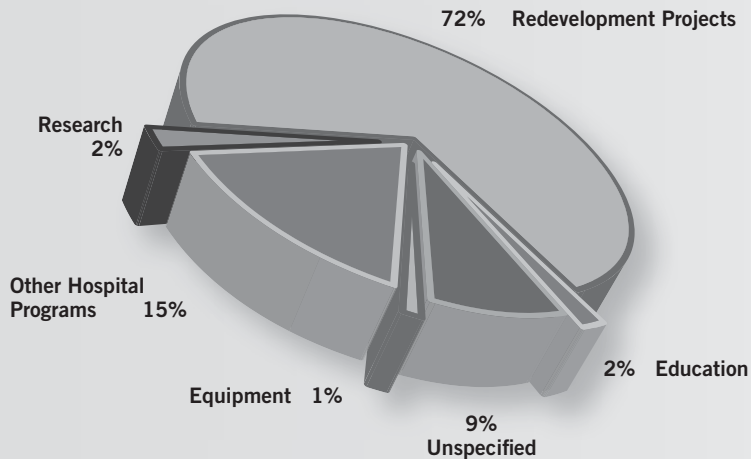
This has been a pivotal year for both the Foundation and our hospitals. We publicly launched the Together We Can campaign and celebrated groundbreaking for the redevelopment projects at Kingston General Hospital. We also saw plans for the redevelopment of Hotel Dieu Hospital and Providence Care move forward. Redevelopment is the greatest change in our health care in a generation and it is exciting that our Foundation and our generous donors are helping to make it happen.

We would like to thank our 12,000 donors and 100 volunteers for their support in 2008/2009. They come from different parts of our region and different walks of life. They share a common interest in enjoying a good quality of life with family, friends and community, and with excellent health care available close to home. Their contributions and commitment to the future of health care in our region will positively impact this community for generations to come.

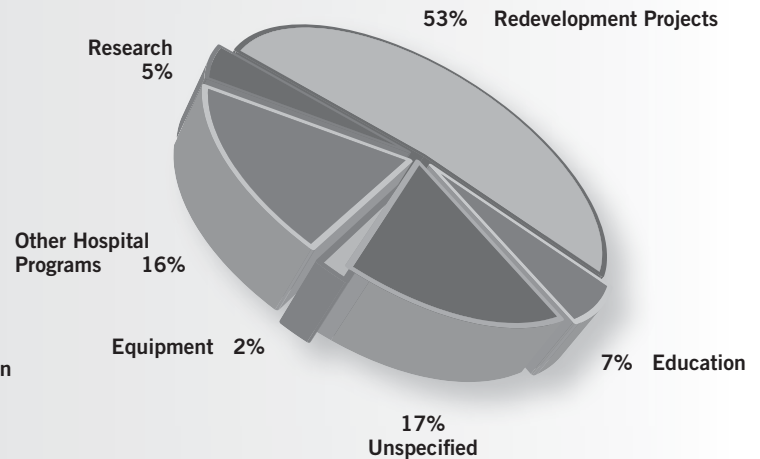
On behalf of the tens of thousands of people, present and future, who will benefit from the redevelopment of our hospitals, we thank you for your support. Please help us spread the word about the Together We Can campaign to the rest of the community.

FINANCIAL REPORT

University Hospitals Kingston Foundation Disbursement of Donations 08/09



University Hospitals Kingston Foundation Disbursement of Donations 05/09



December 1, 2005 to March 31, 2009

Donations

Disbursed to Kingston General Hospital Foundation...	\$5,975,000
Disbursed to Jeanne Mance Foundation (Hotel Dieu Hospital)	1,269,000
Disbursed to Providence Care Foundation	2,374,000
Total	\$9,618,000

Activity Snapshot

Number of volunteers:	\$100+
Number of volunteer hours of service:	4,000
Number of charitable receipts:	12,090
Number of gifts:	20,989
Number of third party events:	120
Visits to website:	42,183

Fundraising Expenditures

Fundraising Program	2,405,000
Total	2,405,000
Excess of Donations over Fundraising Expenditures	7,213,000

Notes

- The \$26 million "raised" total for 2008/2009 was calculated by adding outright cash gifts and new pledges.
- The Foundation uses a sharing formula to disburse gifts to the hospitals. Though final numbers are subject to audit, the shared cash that was received by UHKF and available to be transferred to the hospitals is expected to be \$6.0 million to KGH, \$2.4 million to Providence Care and \$1.3 million to Hotel Dieu Hospital. This does not include certain gifts which go directly to the hospitals.
- The Foundation is governed by its General Members: Kingston General Hospital Foundation, Providence Care Foundation and Jeanne Mance Foundation (Hotel Dieu Hospital).
- Final numbers are subject to audit.
- Numbers are rounded off to the nearest thousand.

2008/2009 Board of Directors

Peter Merkley, Chair	Dr. David Pichora
Richard Kizell, Vice-Chair	Interim Chief Executive Officer,
Jennifer Fisher, Secretary-Treasurer	Hotel Dieu Hospital
David Bonham	Mark Santoni
William Dalton	Peter Splinter
Bittu George	Leslee Thompson
Douglas Hogeboom	President & CEO,
James Holsworth	Kingston General Hospital
Sr. Joan Kalchbrenner	Ed Zarichny
Dale Kenney, President & CEO,	Elia Anagnostopolous
Providence Care	(ex officio, Generation Next)
Donald Large	Ian Wilson (ex officio,
Dan J. MacWhirter	Together We Can)
Edward Murray	

Hotel Dieu Hospital
166 Brock Street
Kingston, ON
K7L 5G2
613-544-3310
www.hoteldieu.com

Kingston General Hospital
76 Stuart Street
Kingston, ON
K7L 2V7
613-548-3232
www.kgh.on.ca

Providence Care
Communications Department
752 King Street West
Kingston, ON
K7L 4X3
613-548-5567 ext. 5995
www.providencecare.ca

University Hospitals
Kingston Foundation
366 King Street East, Suite 201
Kingston, ON
K7K 6Y3
613-549-5452
www.kingstonhospitalsfoundation.ca



University hospitals of Kingston 2008 / 2009 Joint Annual Report